

Lake Jennie News

Autumn Newsletter 2014



Inside this edition

- Lake Jennie Gear
- The Lake Management Plan and Board Activities
- LJIA now a nonprofit charity
- Vegetation Survey Report
- DNR notes
- Membership

Lake Jennie Improvement Association Board

President: Mike Kotila

mkotila@sehinc.com

612.749.6458

Vice President: Randy Newman

newman@newulmtel.net

507.276.3735

Treasurer: Laura Baumberger

lauraleebaumberger@gmail.com

Secretary: Peg Truax

penguins61@msn.com

Scott Lahr

lahrbs80@xtratyme.com

320.295.1286

Randy Nass

miamooch@yahoo.com

320.587.0643

Mark Theis

mdtheis55@yahoo.com

Doug Renkes

dougrenkes@formafeed.com

Dick Nesvold

dick.nesvold@southpointfed.com

A Message from LJIA President:

Some changes occurred at our July and August Board of Directors meetings as new officers were elected by the board. But first, on behalf of the board and the entire LJIA membership I'd like to express great thanks to Scott Lahr and Randy Nass as they came to the end of their terms as President and Vice President. They have been effective leaders of our group, have been most active in our outreach efforts to our membership and area landowners, and have committed countless hours attending meetings and coordinating with other groups like the DNR and Meeker County Association of Lakes. We are lucky to have them continuing on in active roles as directors for LJIA as others assume their previous assignments as officers.

Thanks also to those that have stepped forward to accept new responsibilities including: Dick Nesvold who was elected to the Board as a Director at our general membership meeting in June; Laura Baumberger, now serving as our Treasurer; Randy Newman was appointed as our Vice President; and lastly, I have humbly accepted the role as President. Continued thanks to the rest of our directors - Peg Truax, continuing in her role a Secretary (possibly the hardest and most thankless assignment of all), and the balance of our board members Mark Theis and Doug Renkes rounding out our team.

I'm proud to report progress and accomplishments in several important areas over the last year (see articles elsewhere in this newsletter for more information), a few of these are: LJIA is now a non-profit 501(c)3 making your donations tax deductible; a spring and fall lake weed survey has been completed; and, our lake management plan is complete. Completion of the lake weed survey and the lake management plan greatly improve our position to compete for state and county funding for lake improvement projects that we intend to pursue in the coming months.

Feel free to contact me, or any of the board members with questions, suggestions or if you'd like to assist in any way. Our board meetings are open to members and the general public – so, we welcome attendance and input. Check our website for meeting dates and times.

Thanks!

Mike Kotila, LJIA President

It's not too early to order your Jennie Gear for Christmastime delivery!

Now is the time to order Lake Jennie gear for your Lake Jennie fan!

Gear prices include the price of a small silk screen logo on the front. Special Orders may result in extra charges: embroidered logo \$4, second (large backside) silk screen Logo \$2.

If you are interested in ordering from one to 100 items, please email Randy Newman at newman@newulmtel.net. He will send options for colors for various gear items. Caps are only available with the embroidered fish logo.



These are quality products, and pricing is as follows:

Tees/short sleeve or sleeveless	18
Long sleeve tees	18
Crew sweatshirt	25
Pullover Hoodie	35
Zippered Hoodie	45
Crew Sweatshirt	25
Caps	18



A small portion of your purchase goes to the Lake Improvement Fund. Thank you for your order! Stay tuned as the ordering may be available on our lakejennie.com website soon!

Lake Jennie Approved for IRS Non-profit/Charitable Status

We are very pleased to announce that LJIA has been designated as a 501(c)3 entity. This means that your donations, including your annual dues are deductible on your federal taxes each year.

We will also now be able to apply for and receive grants for major lake improvement projects.

Grant projects are now being planned to improve the water quality for a better lake experience for people who visit or live along the shores of Lake Jennie. Please see the article inside to see what is being worked on by your board and association membership!

Available for Immediate Sale:

Crew Sweatshirt XL Color Ice Grey
Tee Shirts M, L, L, all Ice Grey
Long Sleeve Tee XXL Carolina Blue

Contact Randy Newman to purchase these items. newman@newulmtel.net
507.276.3735

Thank you to Crow River Press for printing the newsletter



Did you know...

❖Your septic system works best when pumped every 3 years or so. In Meeker County a compliance inspection certificate must be issued before a property can be sold, renovated or an addition made. Never use additives in the septic system, natural microbes will do the trick. Dumping bleach, phosphorous and certain detergents into the system can kill the "good" bacteria, which can cause problems in your system. Dumping pharmaceuticals can endanger ground water or the lake as they can eventually leach through. Septic use should also be monitored so as not to overload the system at any one time.



Lake Jennie on Facebook

The Lake Jennie Improvement Association Facebook page is up and running, and a great way to stay informed of upcoming activities. Please go and "Like" the page, and you will keep up to date on any activities or news we post. If you have any pictures or information that would be of interest to our members, please feel free to post them to the page and share! Also, you can simply send a message of any address or email changes, and we will update our lists. New Neighbors? Please let them know about our pages, so they can get informed/involved. Your input is very valuable to us, and we thank you for your help.

Our web page is a work in progress, we will be making improvements to the page itself to include paid members list, current projects including the contact person if you would want to get involved.

We have had success with the Lake Jennie gear, and would be happy to put in another order for any Christmas gifts you may wish to give. Please note, we need a minimum order of 25 items when we place the order. We will do our best to meet the holiday deadline for you.

Lake Quality Monitoring

Lake Jennie was determined by the Minnesota Pollution Control Agency as an "impaired lake" in 2010. Each month of open water, a member of the Lake Jennie Improvement Association board takes water quality samples and sends it to a lab for testing. This information is sent in as a part of a Trend Analysis for monitoring water quality in Lake Jennie. The monitoring sites for the readings occur in the lake proper, and near the inlet by the south access fishing pier. A secchi disc reading is also done at this time. The secchi disc is dropped into the water and the depth is recorded when the disc is no longer visible from the water's surface.

It is interesting to note that this summer's numbers varied greatly from 13 ft in May to 3 ft in August.

VOLUNTEERS

Any Lake Jennie Improvement Association member or interested person is welcome to participate on subcommittees as we do the work to complete the important projects identified by the lake survey and noted in the lake plan. Please contact a board member if you would like to be involved as a volunteer.

Lake Management Plan

In 2012, the LJIA board sent several representatives to a meeting for the Meeker County Area Lakes (MCAL). At this meeting, the board received an opportunity to apply for funding to complete a Lake Management Plan. Once complete, this plan can be used for grant applications and seeking other sources for funds.

Brad Lahr, one of the LJIA board members that year, began the project and started collecting information to complete the plan. It has been a long process with many people helping, and it is nearing it's final draft for submission to MCAL. (For those interested, the final draft will be available on the lakejennie.com website when it is completed, and approved. It is a "living" document and will be updated as information is added, and projects are completed and new ones identified)

The voices of the association membership were an essential part of planning during the early stages of the Plan. At the 2012 Annual Meeting, the membership participated in a strategic planning session where they identified four key areas that they would like to see addressed by improvement projects.:

- Water quality
- Fish management
- Aquatic vegetation "desired" vegetation
- Exotic species

Another important part of the process was to acquire scientific evidence to substantiate the goals as defined by the members. The board contracted for a lake survey, which would indicate the key invasive species problems as well as highlighting other areas of concern.



Approaching Lake Jennie from the east.

What is happening now?

The current board met recently for a strategic planning session to write the first projects into the plan. These include developing projects around the areas defined by membership at the 2012 annual meeting.

Water quality – this is a complicated issue. The priorities defined by the board are dealing first with the problem areas as highlighted by the vegetation survey. We will investigate preventive type strategies prior to treatment strategies. It is clear that the south bay and the western shoreline exhibits problems and it's up to the board, working with the DNR and other agencies, to determine how we can best stop the flow of phosphorous rich runoff into the lake.

Fisheries – fishing continues to be a key area for requesting improvement. We have to investigate ways to improve habitat, request more numbers and varieties of stocked fish, and work with other lake associations and other agencies to reduce the effect that the cormorant population has on the stocking program (some might say it's a cormorant feeding program!)

Aquatic Vegetation – clearly the curly leaf is a problem in early to mid summer and treating it is a priority. We do however, have to focus on ways to prevent the high phosphorous runoffs that are contributing to the overgrowth. We also have to insure that native species of vegetation are maintained in adequate numbers to provide habitat for fish and adequate oxygen supplies.

Exotic Species – at this time, Lake Jennie is free from the ravages of any exotic species. We would like to keep it that way, and we are investigating low cost but highly effective ways of keeping these out of the lake.

If you have thoughts to contribute or want to volunteer to help with any of these projects, please contact Mike Kotila, president.

Lake Surveys Indicate Key Problem Areas on Lake Jennie

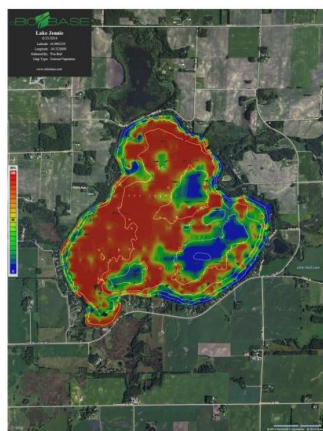
Aquatic Vegetation Survey

The Lake Jennie Association Board contracted with Wenck Associates, Inc. to do an aquatic vegetation survey this summer. The lake was surveyed twice; once in the early summer (June 13) and again in late August (August 22). Graphic results for the surveys are below.

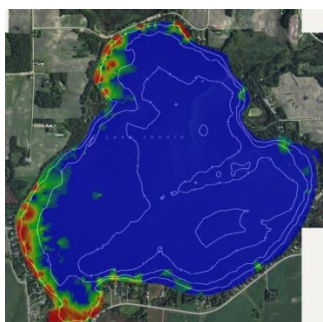
The survey data has helped the board to identify key problem areas of the lake as we work on developing improvement projects and acquiring grants to treat them. This initiative will provide the needed information to complete the lake management plan that was initiated in 2012.



← **Bottom Composition_6132014** shows the bottom hardness of the lake. The darker brown areas are hard bottom (rock, gravel, sand) while the lighter colors demonstrate that silt or muck sediments are present. This information will be remapped during August as the density of curly leaf pondweed affected some of the data readings in portions of the lake.



← **Vegetation Biovolume_6132014** shows the density of vegetation in the lake on June 13th. The red areas have very dense vegetation (nearly 100% biovolume) while the blue or green areas have less dense vegetation. Preliminary data showed that curly leaf pondweed was very abundant in the lake and was found at 197 of 252 survey points. However, multiple native species were also observed during the survey.



← **Vegetation Biovolume_8222014** This map shows the vegetation density observed during the August 22, 2014 survey of Lake Jennie. The red areas are the densest vegetation, with green being less dense vegetation, and blue being no vegetation at all. Obviously, this looks significantly different than the June survey results and demonstrates what happens when the curly leaf dies off! But it also indicates areas of concern when we look at possible sources of phosphorous dense water running into the lake.

Wenck and Associates will be compiling a summary report with all of the data from the surveys, and has offered to attend a board meeting to present the report and talk about what all of this information means in regards to options for treatment and control, and lake quality improvement areas. The board will use the data to work on weed removal and control grants. We have already received a grant to cover most of the expense for the aquatic vegetation survey.

Members: Your input at the Annual Meeting in June of 2012 have helped the board determine priorities for improving the lake experience for all who visit or live on Jennie. Please contact a board member if you are interested in being present for the survey presentation, which will help the board to define the projects and begin seeking grants to complete these projects. Our goal is to get Lake Jennie off the MPCA's Impaired List and back to it's environmental best for recreational and sporting activities now and in the future.

DNR Notes

By Randy Nass

•During the week of Sept 18th the MN DNR closed to the public Pigeon Lake, (just north of Jennie), due to the discovery of Newcastle disease in double crested cormorants. Thirty cormorants were recently found dead. To keep the highly infectious disease from spreading, lakeshore owners should watch for birds with droopy heads or twisted necks. If found on your beach, call the Hutchinson DNR for disposal instructions.

•The Hutchinson DNR conducted electro-fishing Thursday night, Sept 18th on Lake Jennie. This was their second attempt after a boat failure the previous week. This procedure involves a generator in their boat with long probes, sending a charge down into the water. This process temporarily stuns all fish in the shallow water. It is used to determine summer survival rates from the walleye fry that were stocked this spring. They found only 15 walleye in the lake survey. Because of this low number they will be doing a contingency stocking of fingerling walleyes at 1 lb./acre, which will be 1,000 lbs. later this fall.

•Lake Jennie board members have a meeting set in November with Lee Sundmark, Hutchinson DNR supervisor. The topic discussed will be how the cormorant population affects the Lake Jennie walleye stocking efforts. We are hoping for a depredation order to control the high numbers of cormorants seen every spring on Lake Jennie. The DNR did a full lake survey with trap and gill nets this summer to get the latest data on the Lake Jennie fishery. Look for this information to be posted soon on our website.

•Meeker County Area Lakes (MCAL) has set up an Aquatic Invasive Species Prevention Committee (AIS). Five members will represent each of the five commissioner districts. This committee will work with LJIA (as a member lake) to establish the best use of new state grant money to fight the spread of AIS.

What can I do?

People always ask "what can I do to help improve the lake? One small thing as you do fall cleanup, do not put your leaves or yard waste into the lake—doing so contributes to the phosphorous problem!

What Can YOU do to Halt the Spread of Aquatic Invasive Species (AIS)?



Zebra Mussels
impact recreational
use of lakes



Zebra Mussels
attach to plants



Juvenile
Zebra Mussels
are small



Zebra Mussels on
a native clam -
Zebra Mussels
deplete food
supply for native
fish

✓ Hire dock/boat lift installers who are DNR trained Lake Service Providers (LSP).

It's the law! Anyone installing, removing, renting, or leasing water-related equipment in state waters must be DNR trained. The business needs a permit and the worker needs DNR certification. (DNR website: www.dnr.state.mn.us, search **LSP**)

Ask to see the DNR issued certificate of the LSP dock and lift worker. Businesses and workers that are properly trained will be happy to show you their credentials.



✓ **Know that watercraft and all water-related equipment can spread AIS.** This includes fishing boats, jet skis, wakeboard boats, pontoons, sailboats, scuba gear, float planes, canoes, kayaks, all fishing gear, waders, docks, boat lifts, tools, trailers, and waterfowl hunting gear.

✓ **Learn to identify each aquatic invasive** (zebra mussels, Eurasian watermilfoil, spiny water fleas, rusty crayfish, etc.) Watch for any new AIS infestations that may allow quicker and more effective treatment options. Be aware of AIS not currently in MN but considered a threat such as hydrilla or northern snakehead. (DNR website, search **aquatic invasive identification**)

✓ **Know which waters are designated "infested waters"** in Minnesota and other states. And recognize that other lakes and rivers may also be infested and not yet designated. In all cases, take precautions when moving watercraft from lake to lake. (DNR website, search **infested waters**)

✓ **Educate your guests!** Make sure watercraft and water-related equipment of guests arriving from other lakes/rivers (including out-of-state) are free of zebra mussels and other Aquatic Invasive Species like Eurasian watermilfoil, spiny water fleas, and Flowering Rush.

Watercraft coming from other waters should follow recommended dry times or decontamination. The best: **140° water for 10 seconds to kill all AIS.** (100thmeridian.org, search **dry time estimator**)

✓ **Encourage resorts/campsites/hotels to train marina employees** on AIS and to use precautionary measures when working with water-related equipment arriving from other lakes and rivers. All arriving watercraft and water-related equipment needs to be free of AIS - **Cleaned and Drained** before entering the water. Water-related equipment that is **Dry** is less likely to spread AIS.

✓ **Public access inspection program** is available for public accesses - contact the DNR for training. Be **"Eyes and Ears of the Lake"**. (DNR website, search **watercraft inspection**)

✓ **Promote good AIS relationships** among your lake neighbors, the DNR AIS Specialist and law enforcement by including DNR and law enforcement as speakers during your lake association meeting. (DNR website, search **aquatic invasive species contacts**)

✓ **Report suspected new AIS sightings to the DNR.** It's the law!

✓ **Know current laws and follow them.** Before leaving public accesses, water must be drained from all water-related equipment. All bait containers with lake water must be drained and watercraft must be transported with the plug out. (DNR website, search **invasive species laws**)



Minnesota DNR www.dnr.state.mn.us

Produced and distributed by
Minnesota Coalition of Lake Associations (MN COLA)
MinnesotaCOLA@gmail.com
As of 05.13.2014

Thank You Lake Jennie Improvement Association Members!

We would like to thank all members for your annual support through your membership dues and donations. You are instrumental in supporting the Lake Jennie Improvement Association as we pursue water quality and environmental projects that will improve the quality of your experience on the lake. **The following are current paid members of the association:**

Babekul Kelly	Kotila Mike & Brenda	Renkes Doug & Julie
Broesder David & Barbara	Kragenbring Clint & Joyce	Roeser Tim & Ann
Broll David & Lori	Lahr Scott & Barb	Rosenau Scott & Peg Truax
Callan Marilee	Lasley Leonard	Roskammer Richard
Carlson Jean	Latt Mark & Trudy	Senneseth D A
Carolan Sandra	Lundin Dan & Doris	Stresemann David & Donna
Connelly Richard & Carol	Meyer James & Karen	Tews Gerald
Curtiss John & Vickie	Nagel Alan & Karen	Theis Laura B & Mark
Gallett Tom & Char	Nass Randy & Mary	Thorud Donna Cooper & Kevin
Gersdorf Jack & Marian	Nesvold Dick & Nancy	Tiebel Stephen & Linda
Giancola Nicky	Newman Randall & Carolyn	Valen Bob Sandstede & Janet
Greff Kent & Judy	Peterson Bob	Weyandt Jeff & Angela
Heikes Kevin & Gloriann	Peterson Peter & Liz	Woelfel Glen & Claire
Hoppe Matt & Erin	Petterson Bruce & Sandra	Wurm Konrad
Kephart Doug & Sandy	Portele Ross & Alecia	Yost Pamela
Kerber Pete & Irene	Prins Hazel	
Kirby Gerry & Karen	Read Melvin & Janet	

If your name is not on the list and you feel that is in error, or if you are not currently a member and would like to be, contact Laura.

Please join!

Remember, your "dues" and any donations made to the LJIA are now tax deductible.

Memberships/donations can be sent to:

Lake Jennie Improvement Association

Laura Baumberger, Treasurer
71840 CSAH 18
Dassel MN 55325



The board would like to extend a special thank you to those members who made a donation above the \$25.00 annual dues donation level. Your contributions are helping to make possible the work that continues toward cleaning up Lake Jennie! Thank you!

Your empty aluminum cans can help us light the way

Aluminum cans that are donated to the Lake Jennie Improvement Association are recycled and the money is used to support the streetlight on the south landing.

Every little bit helps! Bring your cans to the recycling bin at the south landing, or drop them by Randy Nass's home. Randy has also offered to pick them up for Association members! Thank you for your donation.

Board membership changes

- Welcome to Laura Baumberger as the treasurer for FY 2014-2015.
- Welcome also to Dick Nesvold, who has joined the board this past summer.
- Thank you to Pete Peterson, who served on the board for FY 2013-2014.



Lake Jennie Improvement Association

c/o Mark Theis
71840 CSAH 18
Dassel, Minnesota 55325