

# What's Happening....

A newsletter of the Lake Jennie Improvement Association November, 2012

## Lake Jennie Improvement Association Board Class of 2012-2013

**President:** Scott Lahr  
lahrbs80@xtratyme.com  
302.295.1286

**Vice President:** Randy Nass  
miamooch@yahoo.com  
320.587.0643

**Treasurer:** Greg Tambornino  
gdtambornino@comcast.net  
651.470.6783

**Secretary:** Peg Truax  
penguins61@msn.com

Tom Gallett  
tcgallett@centurylink.net  
952.237.9479

Clint Kragenbring  
cwkrags@charter.net  
952.212.4302

Mike Kotila  
mkotila@sehinc.com  
612.749.6458

Brad Lahr  
blahr@productivity.com  
320.295.1377

Mark Theis  
mdtheis55@yahoo.com  
320.224.5786

The Association Board meets on the 3rd Saturday of each month, except for November and December. These are open meetings; association members and the public are welcome! Contact a board member for the time and location of the next meeting, or if you would like to present an item for the board's attention.

## 2012 Annual 4th of July Parade



*"Best theme" winners were Pirates Paul and Isaac Nass (photo 1) and Stephen and Renee Pawlyshyn (Not pictured) Best dressed dock went to the Mike Kotilla family (photo 2). Congratulations!*

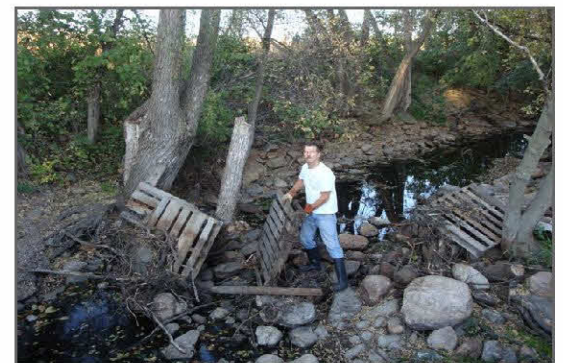
Thanks to everyone who participated and had a great time on Lake Jennie in 2012. See you all next year on the 4th!

## Association Board Update

Six members attended a class offered by the Southwest Initiative Foundation/2012 Healthy Lakes & Rivers Partnership to develop a Lake Management Plan that will serve as a roadmap for improving our lake and lake experience. Board members started taking water samples last summer. These samples were submitted to a lab that tested them for two of the basic water quality parameters: phosphorous and chlorophyll. Secchi disk readings (clarity) were also recorded. These three indicators will be used to calculate the Trophic Status Index (TSI) for our lake and will compared with other lakes in the area. The TSI results will inform the lake plan and help with developing ways to address the problems.

At the annual meeting last June, Association members participated in task groups that helped the Board to set priorities for the Lake Management Plan. Thanks to all who participated in this process. The plan should be available to the membership soon. Your board members maintain contact with local water and wildlife management agencies, as well as speaking for Lake Jennie to our local and state legislators. A special thanks to Randy Nass, for speaking up for Lake Jennie Members!

This photo shows Randy hard at work cleaning out a dammed culvert between Lake Jennie and Little Wolf. Bow hunters have dammed the culvert in an attempt to keep the carp in easier range. This creates a water flow problem between the lakes and affects the water quality and the eco-system of both lakes. The Lake Improvement Board supports efforts that will improve or maintain the quality of the lake—and the experience of all of the owners and visitors of Lake Jennie. The board approves expenditures to clean up areas such as these, and often board members volunteer their time to these clean up efforts.



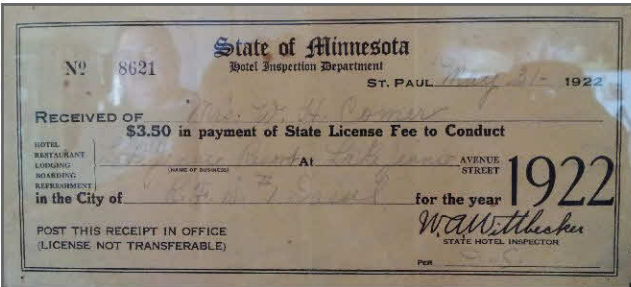
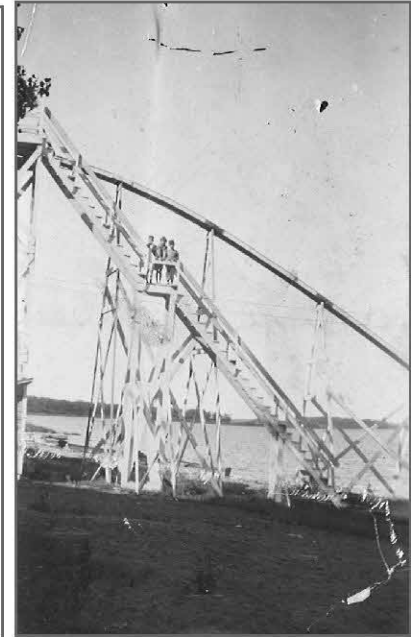
## Some Jennie History...

On the walls of Clint Kragenbring's lake place are some great photos showing Lake Jennie history. These photos were likely taken in the 1920's. His property, on the eastern shore, was once a booming resort for the Hutchinson/Litchfield area. Owned by a family named Comer, the Lake Jennie Resort provided lake-style entertainment for many. The resort was a popular place until the 30's, when the dust bowl nearly dried the lake up. It's said that you could walk all the way across on dry land. It's been said that some even farmed the area during that time. Pictured here are some of the photographic remnants from the heyday of Comer's era.



There were two bath houses at the Lake Jennie Resort and several cabins for rent. There are stories of townspeople arriving in a horse and carriage to spend the day at the lake.

The photo on the right shows a huge wooden slide that was built at the shoreline. It would land its riders in the lake.



This photo is a receipt from the state of MN for the license to conduct a hotel/resort. The year was 1922 and the cost of a license was a mere \$3.50.

*If you have any old photos or stories about the history of Lake Jennie, email copies to any board member for our next newsletter!*

**1. Clean** visible aquatic plants, zebra mussels and other prohibited species from watercraft, trailers, and equipment before transporting from any water access.

**2. Drain** water from bilge, livewell, motor, ballast tanks, and portable bait containers before leaving water accesses or shoreline property.

**Keep** drain plug out and water-draining devices open while transporting watercraft.

**3. Dump** unwanted bait in the trash.